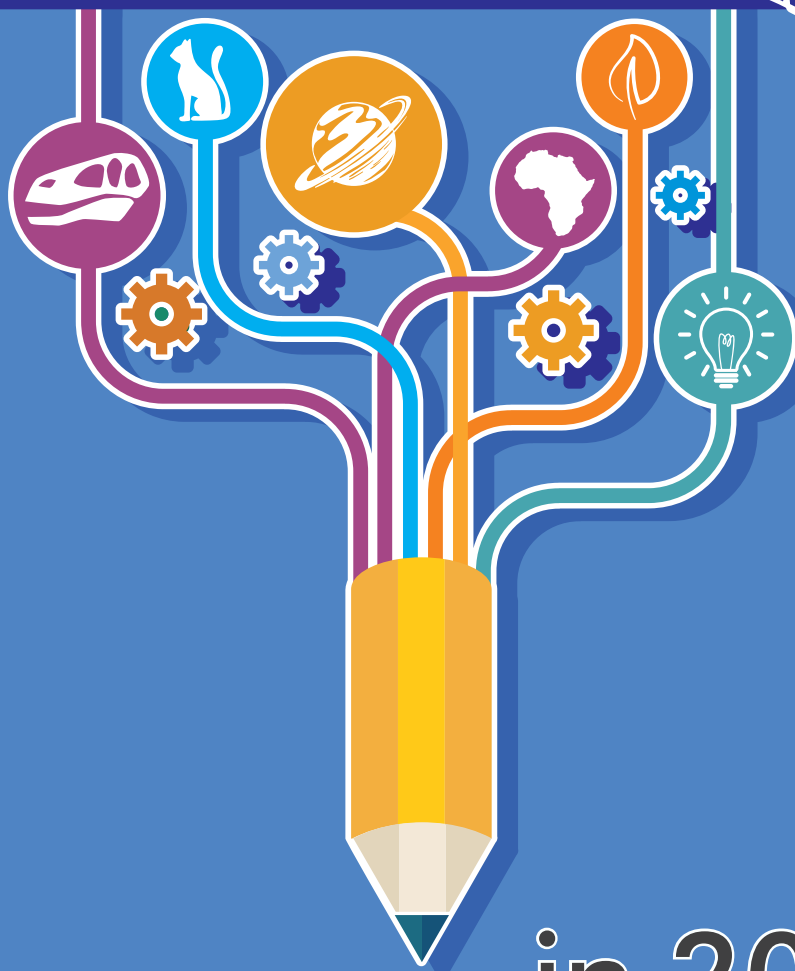


VISIT US at the

NATIONAL
MUSEUM
Bloemfontein



in 2025

for exciting educational curriculum-based
lessons to school groups

CURRICULUM-BASED LESSONS ARE OFFERED TO INTERMEDIATE AND SENIOR PHASES

- Lessons must be booked in advance (no extra fee – just your entrance fee to the Museum)
 - Each lesson lasts about 1 hour
- Most of our lessons can be adapted for different grades
- Real objects & experiments (where possible) compliment our lessons

The following curriculum-based lessons are presented on request, at any time during the year:

SOCIAL SCIENCES

Geography

- Geomorphology (Gr 10)
- Water in SA (Gr 4)
- Sustainable development (Gr 11)

History

- Old Bloemfontein (Gr 4)
- Ancient Egypt (Gr 5)
- Kingdom of Mali & Timbuktu (Gr 7)
- Nelson Mandela (Gr 4)
- The San (Gr 5)
- Mapungubwe – An African Kingdom (Gr 6)
- Multiculturalism (Gr 6 – 9)

LIFE SCIENCES

- Fossils (Gr 10 – 12)
- Human evolution (Gr 12)

NATURAL SCIENCES

- The Solar System (Gr 4, 6, 7, 8, 9)
- Energy & Electricity for Juniors (Gr 4,5,6)
- Natural disasters (Gr 4 – 7)
- Animal habitats & shelters (Gr 4)
- Energy & Electricity for Seniors (Gr 7,8,9)
- Life cycles (plants & animals) (Gr 5)
- The Periodic Table of Elements (Gr 7 – 9)



OUTREACH LESSONS!

Please invite us to visit your school

FREE OF CHARGE!

We are prepared to visit schools within a radius of about 100km of Bloemfontein/Mangaung to present our lessons.

GUIDED TOURS OF THE MUSEUM

A tour lasts about 1½ hours and must be booked in advance.

MOBILE MUSEUM

Museum on the Move!

A panel van containing stuffed animals and real objects from the various Museum departments and exhibitions.

To arrange a Mobile Museum visit to your school,
contact: Education Department Staff,
Tel 051 447 9609.

**A SPECIAL PROGRAMME IS AVAILABLE FOR PRE-PRIMARY
AND FOUNDATION PHASE SCHOOLS (GR R – 3)**



TO GET THE MOST OUT OF A MUSEUM VISIT - please bear the following in mind:

- Book in advance. Be on time.
- Please remember to bring your Reference Number with you.
- Late arrival can lead to the cancellation of your lesson as it may inconvenience the next class.
- Educators are responsible for the discipline of their classes and are expected to accompany, supervise and control the learners at all times during a visit to the Museum.
- Educators must ensure that learners behave appropriately in the Museum: no running, shouting or playing games in the Museum is allowed – learners should not do anything to endanger themselves or spoil the enjoyment of the Museum by other visitors.
- Climbing onto animals is not allowed and no specimens, objects or artefacts may be touched.

FOR BOOKINGS

Contact the Museum's
Education Department staff:

Tel: 051 447 9609

Fax: 051 447 6273

Email: ancilia@nasmus.co.za

Street Address: 36 Aliwal Street, Bloemfontein 9301

Postal Address: PO Box 266, Bloemfontein 9300

Website: www.nasmus.co.za



Special entrance fee for school groups of 10 or more:

School learners Gr R – 12: R2,00 each
Adults (including tertiary students): R5,00 each



an agency of the
Department of Sport, Arts and Culture